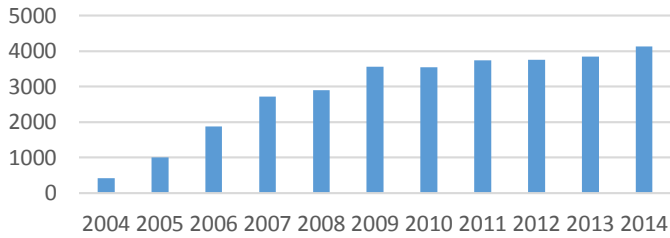
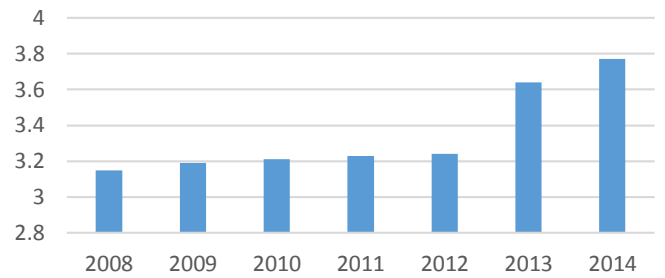


# Tennessee Scholars Data from 2004-Present

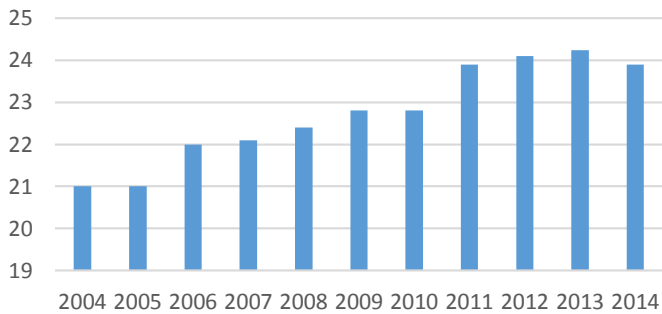
Tennessee Scholars Increase in Graduates  
2004-2014



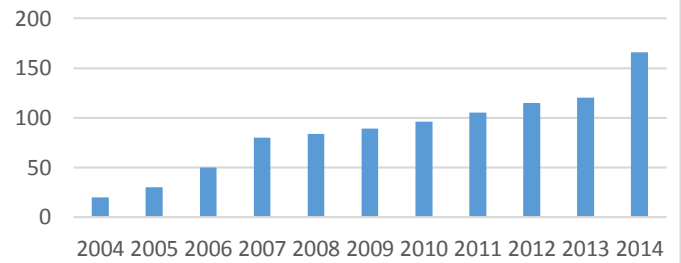
Tennessee Scholars Average GPA 2008-2014



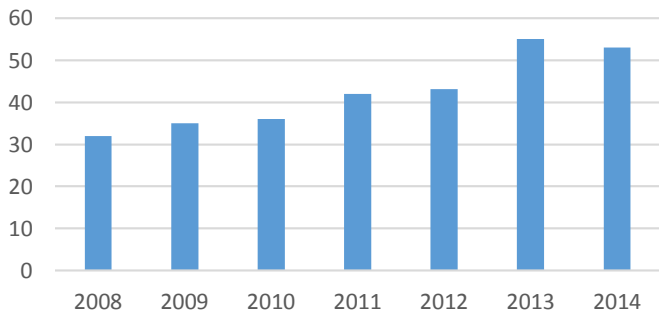
Tennessee Scholars ACT  
2004-2014



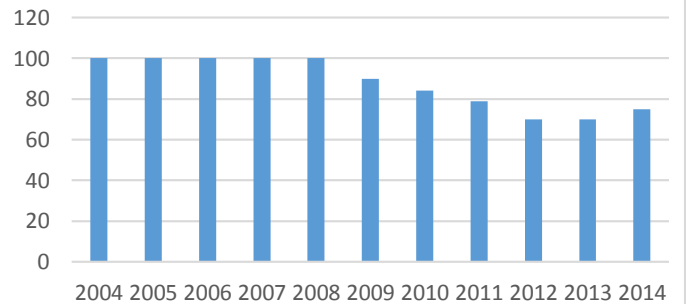
Average volunteer hours per Tennessee Scholar graduate  
2008-2014



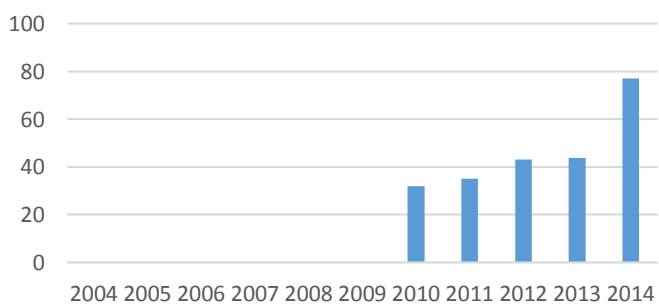
Average number of students taking AP Classes  
2008-2014



Average % of students taking CTE  
2008-2014



% taking Dual Credit  
2008-2014



Year	GPA
2004	
2005	
2006	
2007	
2008	3.15
2009	3.19
2010	3.21
2011	3.23
2012	3.24
2013	3.64
2014	3.77

Year	Grads
2004	426
2005	1010
2006	1881
2007	2721
2008	2898
2009	3555
2010	3551
2011	3750
2012	3765
2013	3849
2014	4141

Year	Avg Volunteer hrs
2004	21
2005	21
2006	22
2007	22.1
2008	22.4
2009	22.8
2010	22.8
2011	23.9
2012	24.1
2013	24.24
2014	23.9

Year	ACT
2004	21
2005	21
2006	22
2007	22.1
2008	22.4
2009	22.8
2010	22.8
2011	23.9
2012	24.1
2013	24.24
2014	23.9

Year	% Taking CTE
2004	100
2005	100
2006	100
2007	100
2008	100
2009	90
2010	84
2011	79
2012	70
2013	70
2014	75

Year	% Taking AP
2004	
2005	
2006	
2007	
2008	32
2009	35
2010	36
2011	42
2012	43.1
2013	55.1
2014	53

Year	% Taking Dual Credit
2004	
2005	
2006	
2007	
2008	
2009	
2010	32
2011	35
2012	43
2013	43.8
2014	77